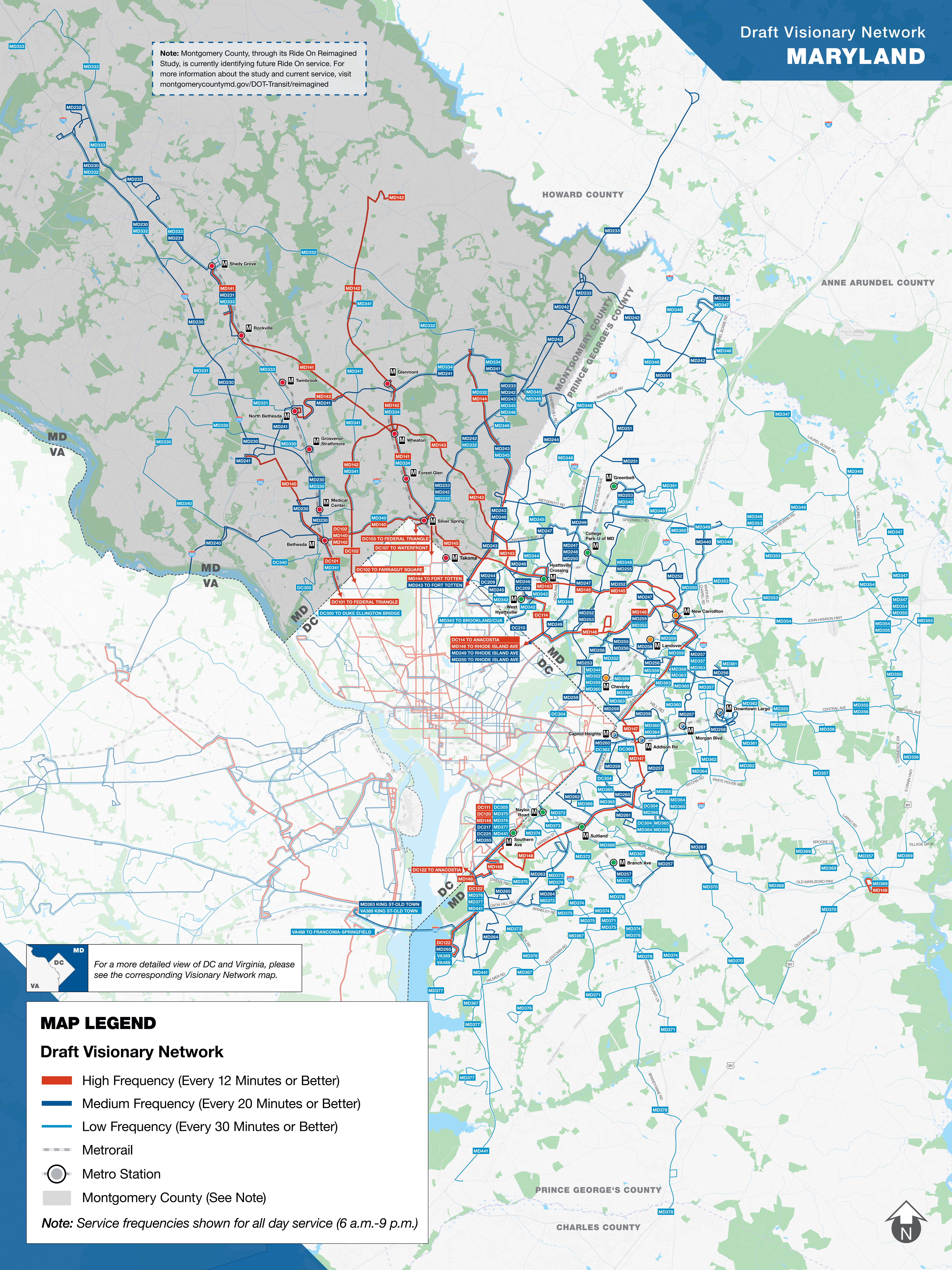


Note: Montgomery County, through its Ride On Reimagined Study, is currently identifying future Ride On service. For more information about the study and current service, visit montgomerycountymd.gov/DOT-Transit/reimagined



MD
DC
VA

For a more detailed view of DC and Virginia, please see the corresponding Visionary Network map.

MAP LEGEND

Draft Visionary Network

- High Frequency (Every 12 Minutes or Better)
- Medium Frequency (Every 20 Minutes or Better)
- Low Frequency (Every 30 Minutes or Better)
- Metrorail
- Metro Station
- Montgomery County (See Note)

Note: Service frequencies shown for all day service (6 a.m.-9 p.m.)

