



# Solar Carport Project

 Cheverly Station  | 5503 Columbia Park Rd | Cheverly, MD 20785

## SITE PROFILE

### Overview

- 2.48 megawatts (MW) of solar photovoltaic (PV) carports will be installed at Cheverly Park & Ride.
- Renewable energy generated from the solar carports will be provided to subscribing Maryland residential and commercial community solar customers.
- To enhance customer safety, solar carports will feature new security cameras, emergency phones, upgraded LED lighting and covered parking.
- Anacostia, Southern Ave, Naylor Rd and Cheverly stations will all receive solar carports.
- To support electrical vehicle parking, underground electrical conduit will be installed in a limited section of the Park & Ride.



### Fast Facts



#### Construction Timeline

Approximately  
Spring 2023 -  
Fall 2024  
(substantial completion)



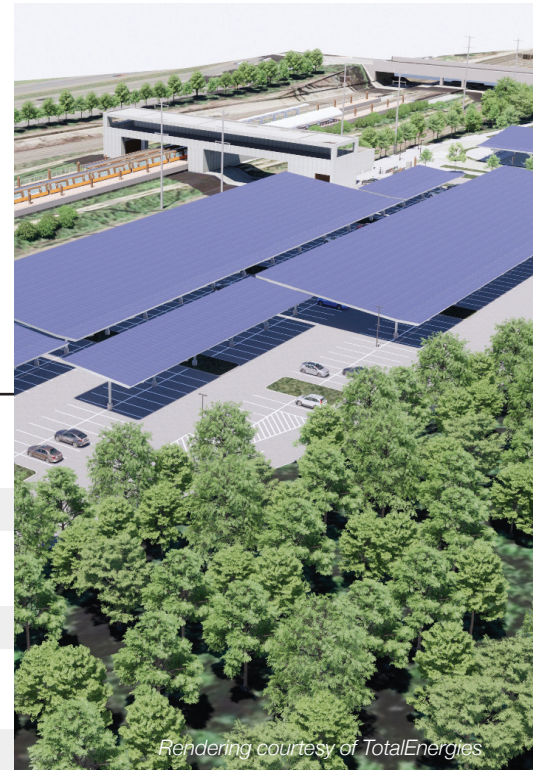
#### System Size

2.48 MW  
Over 5,500 450W  
panels, covering  
area equivalent to  
2.15 football fields



#### Annual Production

Nearly 3,348,000  
kilowatt hours (kWh)  
Equivalent to the  
electricity used by  
281 homes



Organization	Role
MN8 Energy LLC	Financer, solar carport owner/operator
TotalEnergies	Prime, designer and construction management
New Columbia Solar	Solar installation (local business)
Green Construction	Electrical work for solar installation (local business)
BRC International	Electrical work for lighting and CCTV

### Learn more



[wmata.com/solarcarport](https://wmata.com/solarcarport)

Scan for  
photos

