



# SafeTrack: Surge 9

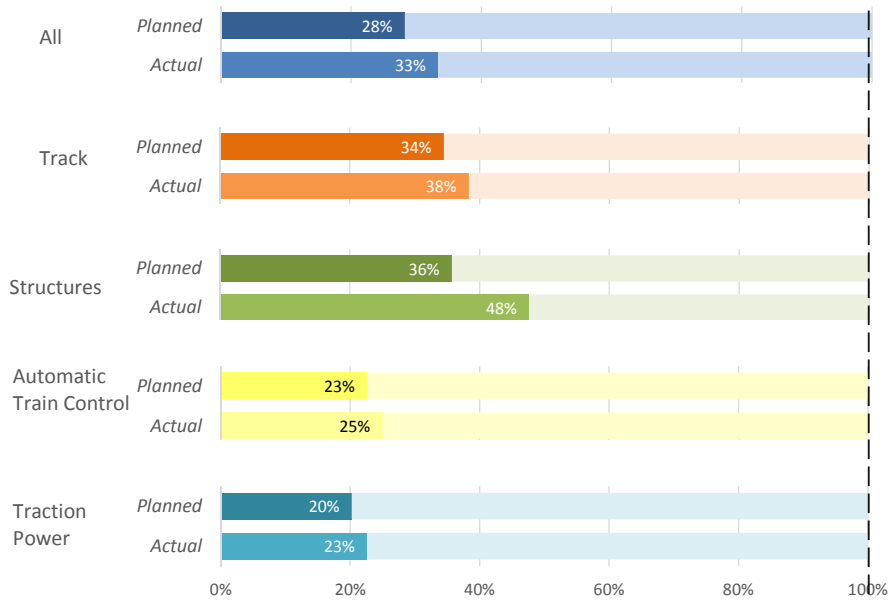
**DATES:**  
September 15-  
October 26

**WORK ZONE:**  
West Falls Church to Vienna, Continuous Single Tracking (with Full Shutdown September 24-25)

*Progress Report  
Published 09/28/2016*

**SCOPE OF WORK:** Renewal of rail and power infrastructure on this portion of the Orange line, including crossties, track circuit equipment, and power cables.

## Overall Progress (% Work Complete Through Sunday, 09/25/16)



\*Surge #9 results are preliminary and subject to quality control processes which will remain continuous throughout the duration of SafeTrack. Any remediation work that is identified will be accomplished during normal maintenance times.

Actual work complete represents the % complete of planned across all tasks.

At the conclusion of work on Sunday September 25th, Surge 9 track and structures work, as well as power and automatic train control renewal efforts were slightly ahead of schedule. By this point, 11 days into a 42-day Surge, Metro had planned to complete about 28 percent of work. The weather has cooperated and Metro staff and contractors have managed to complete about 33 percent of all work planned for the entire Surge.

Crosstie replacement is the main focus of track work in this area, and crews have replaced over 4,000 ties by working around the clock over these 11 days. Structures crews have focused on repairing gates and signage, and parapet walls and cable troughs along the track bed.

Automatic Train Control (ATC) crews were focused on repairing intrusion detection warning (IDW) boxes during this period as well as signal lights. Crews will continue to work on inspecting and repairing IDW boxes in the area.

Work on the traction power system requires that the power be removed on both tracks, limiting crews to a 4-hour overnight work window and during shut downs. Traction power work is slightly ahead of schedule due to crosstie crews having cleared the area faster than originally planned.

