



# SafeTrack: Surge 7

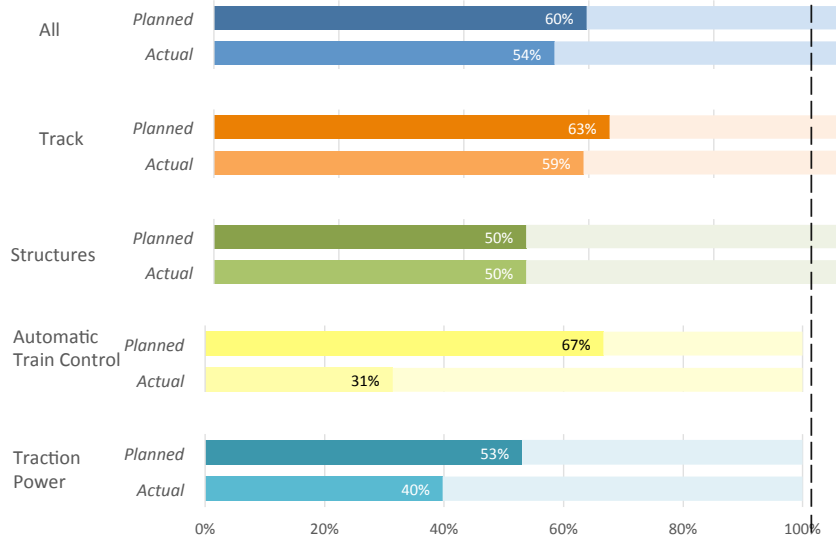
**DATES:**  
August 9-18

**WORK ZONE:**  
Shady Grove to Twinbrook, Continuous Single Tracking (with Full Shutdown August 13-14)

**SCOPE OF WORK:** Renewal of rail and power infrastructure on this portion of the Red line, including crossties, track circuit equipment, and power cables.

*Progress Report  
Published 08/15/2016*

## Overall Progress (% Work Complete Through Friday, 08/12/16)



At the conclusion of the Friday, August 12th night shift, Surge 7 track and structures work was on schedule, but power and automatic train control renewal efforts were slightly behind. By this point, four days into a 10-day Surge, Metro had planned to complete about 60 percent of work. Despite the heat, Metro staff and contractors had managed to complete about 54 percent of all work planned for the entire Surge.

Crosstie replacement is the main focus of track work in this area, and crews have replaced almost 3,000 ties by working round the clock over these four days. Extreme heat slowed down work on Friday and pushed some tasks into the weekend. Structures crews have focused on repairing gates and signage, and clearing vegetation from the track bed.

Automatic Train Control crews were focused on repairing intrusion detection warning (IDW) boxes during this period. Some repairs were more extensive than expected, and require crews to return to these areas before the end of the Surge to complete all planned work.

Work on the traction power system requires that the power be removed on both tracks, limiting crews to a 4-hour overnight work window. Work is slightly behind schedule because work crews were reallocated to address high priority issues in other parts of the system. Staff will prioritize the most critical tasks to ensure that those are complete before the Surge ends.

\*Surge #7 results are preliminary and subject to quality control processes which will remain continuous throughout the duration of SafeTrack. Any remediation work that is identified will be accomplished during normal maintenance times.

Actual work complete represents the % complete across all tasks.

